



**STERLING
CRANE LORRY**

**DAF XD 370 FAR 6x2
STERLING PK33 CRANE LORRY**

CHASSIS SPECIFICATION

Ver.1 | Issued
05/25

DAF XD 370 FAR 6x2 STERLING PK33 CRANE LORRY

MAKE / MODEL:

DAF XD 370 FAR 6x2 Rigid Chassis

DRIVE LINE:

Drive line is fitted with 10.8 litre, multi-torque 6-cylinder diesel MX-11 Euro 6 engine:

Outputs:	270 kW (367hp)	@	1,600 rpm
Maximum Torque:	1,950 Nm	@	900 to 1,125 rpm

Equipped with 12-speed automatic direct drive TraXon 12TX2010 gearbox, ratio 16.69-1.00. Traction aid 15.0 t. Rear axle ratio 3.08.

Engine will idle shutdown after 5 minutes. Urge-to-move function is a manoeuvring mode that causes the vehicle to start rolling slowly without using the accelerator. Eco-fuel is a shift strategy that focuses on best fuel consumption. This is selected automatically but can be temporarily turned off to increase performance.

Fitted with driven rear axle with a mechanical differential lock. The ASR (anti-slip regulation) system prevents the driven wheels from slipping when accelerating at driving off and helps the vehicle to remain stable on critical road services.



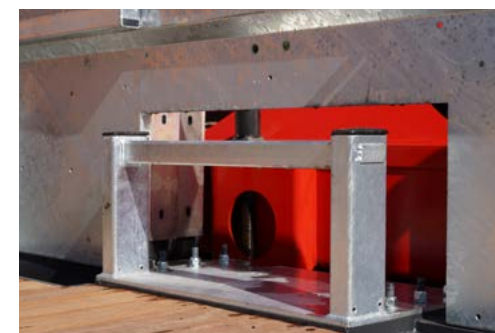
CAB EXTERNAL:

Cab external features the following:

- Maintenance free 4-point mechanical cab suspension with integrated shock absorbers.
- Translucent Midnight Blue external sun visor.
- LED head and fog lights.
- LED headlights.
- LED daytime running lights.
- Double glazed window in cab rear wall.
- Lower door window passenger side.
- Main, wide angle and front view mirrors.
- Camera at the rear of the vehicle for rear view. Images shown on dashboard display.
- Central door locking with exterior light checker function.
- Rigid cab steps with anti-slip tread.

COLOUR:

- | | |
|-------------------|---------------|
| • Cab: | E1980WHITE |
| • Lower cab step: | Stone grey |
| • Mirrors: | Black |
| • Chassis: | Grey |
| • Headlamp Panel: | Crystal White |
| • Bumper: | Crystal White |



CAB INTERIOR:

Cab interior is in light trim colour, with door panels and dashboard finished in grey. The dashboard descends towards the front screen to create a more direct view of the road. Dashboard has 2x 12V/15A and 3 USB-A connections. The cab interior is decorated with a hexagon pattern, with black accents. The cab is lined with sound absorbing material.

Steering wheel is finished in leather. The driver's seat is air suspended, high backed and with armrests. Driver side window has roller sun blind. The passenger seat is foldable with adjustable headrest. Both have black seat belts. Windows are opened electrically. There is an extractable dashboard table at the top of the centre console. The centre console also has an open storage compartment.

Sleep compartment has storage underneath the lower bunk. Additional storage is available to the left and right of the drawer, accessed by tilting the bunk. Bunk has 150 mm thick "Xtra Comfort" pocket sprung mattress. There are curtains along the windscreen and side windows, and an additional curtain between driving area and sleep compartment.

Cab lights are LED comprising of two large LEDs in ceiling, dimmable flood lights, dimmable red night driving light, and separate spotlight for driver and passenger. Climate control automatically controls temperature, blower, air distribution and air conditioning. A water-to-air 6 kW auxiliary cab and engine heater with residual heat pump and time. Air is filtered to remove engine gasses and odours.



CHASSIS SPECIFICATION

Ver.1 | Issued
05/25

DAF XD 370 FAR 6x2 STERLING PK33 CRANE LORRY

ECAS remote is used to raise and lower suspension. Adaptive cruise control, forward collision warning system and advanced emergency braking system are included.

A 10.1 inch touch display with control buttons is in the dashboard wing, includes an FM/DAB/DAB+ radio integrated in the system as well as streaming functionalities via USB and Bluetooth, and phone capabilities. Supports Apple CarPlay and Android Auto via USB. There is a 5" TFT display in the instrument panel and driver performance assistant (DPA). Stoneridge or VDO tachograph.

CHASSIS:

Chassis side member is 310 mm x 7.0 mm thick steel. With full length inner reinforcement. Wheelbase is 5,900 mm with 2,800 mm overhang. Exhaust discharged to the right-hand side with horizontal DPF/SCR unit via low exhaust diffuser.

EAS unit behind 2nd front axle at right hand side. Horizontal battery box and 45 L AdBlue tank below battery box at left-hand side. Fitted with steel air tanks. 430 L aluminium fuel tank on right hand side. Front underrun protection according to EU directive 2000/40/EEC, and spray suppression according to EU directive 91/226EEC. Rear lights LED.



BRAKE SYSTEM:

Equipped with exhaust brake. Electro-pneumatic controlled park brake with Auto Apply function when driver's door is opened, or ignition is off. This prevents the vehicle from being left unparked.

Twin cylinder air compressor with heated dryer and economy mode. Ventilated disc brakes front and rear. Dual circuit air system with electronic control (EBS). Engine driven, water-cooled air compressor with automatic heated dryer.

AXLES & SUSPENSION:

Front Axle Type: 183N, 112 mm vertical offset, Parabolic leaf suspension with shock absorbers and stabiliser. Max load 2 x 9.0 tonnes.

Rear Axle Type: Driven type SR1344, single reduction and 4 air bellows. Non-driven steered trailing axle with 2 air bellows. Max group load 19.5 tonnes. Trailing axle load 7.5t.

Driven rear axle and non-driven steered trailing axle air suspension is electronically controlled, includes shock absorbers and stabilisers. Parabolic front suspension at regular driving height. Rear trailing axle automatically lifted when axle load permits it. System operates at vehicle speed of 4 km/h.



WHEELS & TYRES:

Steel disc wheel rims in silver grey with wheel protection rings and centre section also silver grey (RAL 9006). Front axles 385/65R22.5 22.5 x 9.00. Rear axles 315/70R22.2 22.5 x 9.00. Premium make tyres fitted. Equipped with tyre pressure monitoring system.

POWER TAKE-OFF (PTO):

First PTO type N.4/c mounted below the gearbox counter shaft. Gear ratio 32/25 direct pump drive.

ELECTRICAL POWER SUPPLY:

Alternator 110 A, 2 x 175 Ah batteries.

GVC & GCM:

- Chassis weight related technical GVM max. 28,000 kg
- Drawbar coupling related max GCM max. 53,000 kg
- Driveline related GCM max. 38,000 kg class 2

SAFETY & SECURITY:

Fitted with acoustic reverse warning with override switch. Basic engine immobiliser. Prepped for alcohol interlock system. Compliant with UN Regulation R155 concerning cyber security management systems and UN Regulation R156 concerning software update management systems.

The lane departure warning system prevents inadvertent lane changes due to driver fatigue or distraction and to form an effective driving aid in low visibility. Electronic vehicle stability control system enhances active driving safety by improving directional stability (understeer, oversteer) and additional roll-over safety.

Speed limit recognition system informs the driver of the maximum permitted speed, using map-based information and traffic sign recognition via a camera at the front of the vehicle.

WARRANTY:

1 year chassis cab with 2nd & 3rd year Driveline. This takes care of all warrantable repairs on the vehicle for the first two years and on the driveline for this year together with associated with breakdown coverage.

SERVICE & MAINTENANCE:

Two options are available at additional monthly cost.

1. Compliance package.
2. Full R&M package, please ask for full details or a monthly cost.

BODY DESCRIPTION:

The body is approximately 8 m long (maximum legal length) and is built to a 26-ton spec. It is an interlaced, fully welded steel construction with cross members spaced at 400 mm. The low-profile underframe allows for minimum deck height. The angled heavy duty side rails are 10 mm thick.

- Recessed lashing rings are set in to top of side rail – 8 each Side.
- Heavy duty lashing rings under side rails for chains – 8 each side.
- Rope hooks are fitted to every cross member.

Single bends in beavertail allow for minimum loading angle (approximately 12° - 14°). 28 mm hardwood is finished with timber sealant to prevent water ingress.

Headboard is 1.2 metre high and is constructed with heavy duty steel with KEL-BERG profile cut into it. Chain bar also fitted.

BODY FEATURES:

LED marker lights, spray suppression and side guards all fitted to meet current legislation. Body is shot blasted and cleaned, then painted in two pack paint to customer's colour of choice. Ramps and headboard to be finished in hot dip galvanised. One powdered coated steel toolbox is fitted to the side of the body. Recessed tool trays are fitted either side of winch plates.



RAMPS:

2.5M x 1.0M fold forward Mega wedge hydraulic ramps fitted to the rear of the body. Ramps powered by an electro hydraulic power pack mounted in a weatherproof box. Check valves fitted to rams to guard against hose failure.

AUXILIARY FEATURES:

Rear steady legs powered by hydraulic rams with auto lower. Winch plate fitted to allow winch to be retro fitted. Pull-out step and grab handle fitted to the front nearside. Conspicuity tape fitted to the side and rear of the body. One pair of twist locks fitted to the front of the body. Sockets set into the deck to provide facility for a handrail to be fitted at a later date. WVTa Included.

CRANE DETAILS:

Vehicle is fitted with Palfinger PK33002EH C BOOM. Details below:

Lifting Capacity:

- 7.400Kgs @ 4.1m
- 3.800Kgs @ 7.9m
- 2.150Kgs @ 12.2
- Lifting moment: 305.0 KNm (31.1mts)
- Slewing range: 400°

Classification according to EN12999:2011. Two laterally and vertically hydraulically extendible stabiliser jacks of rigid design with pilot operated non return valves.

Maximum stabiliser spread 7.8m (R3X). Tillable footplate. 4 section hydraulic extension boom from 7.7m - 12.2 m including geometry control. Paltronic 50 rated capacity indicator with overload protection and emergency cut-off & Hour counter.

Box level on each side of crane and 4 function radio remote control PALFINGER/DANFOSS with linear control levers.

- 4 element control valve, LED display on handset
- Emergency control on crane column
- Oil cooler 10.5kw
- Load hold valves on slewing, inner/outer and extension boom cylinders with return oil utilisation
- Stabiliser control valve with provision for use of hydraulically extendible additional stabilisers
- AUSW stabiliser beam not stowed
- Warning lights on stabilisers
- GAS01 RPM control from RRC handset
- Work light on/off
- Painted in RAL3002 and crane accessories comprising
- Hook, fixing attachments, chassis mounted 300 litre
- Hydraulic oil tank with return filter
- Boom above Horizontal
- High pressure filter
- HPSC Stability Monitoring System